



MAORO















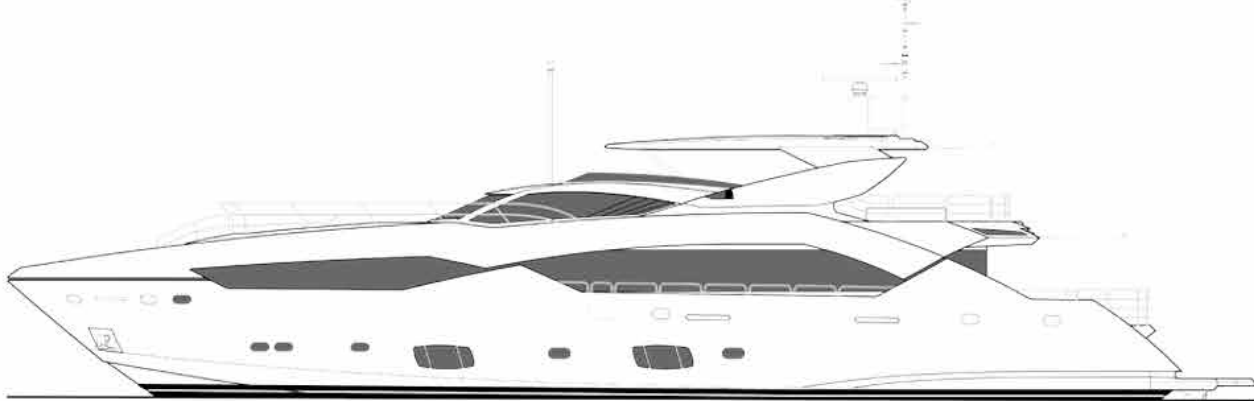




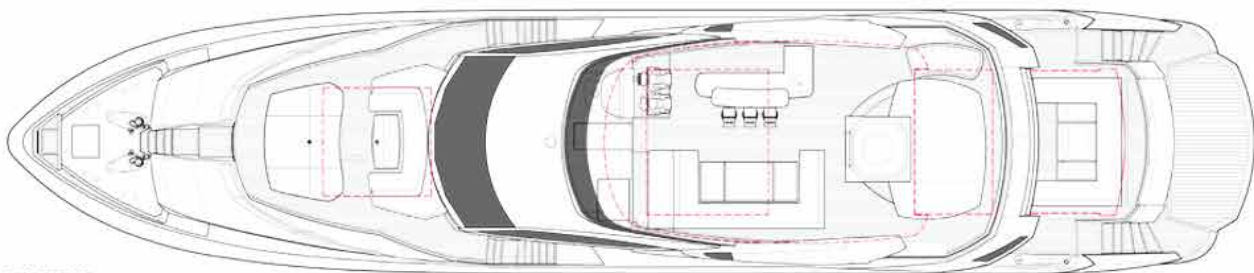




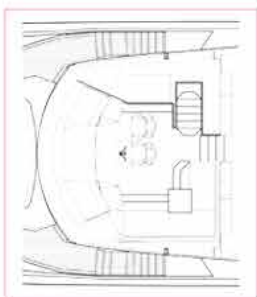




PROFILE



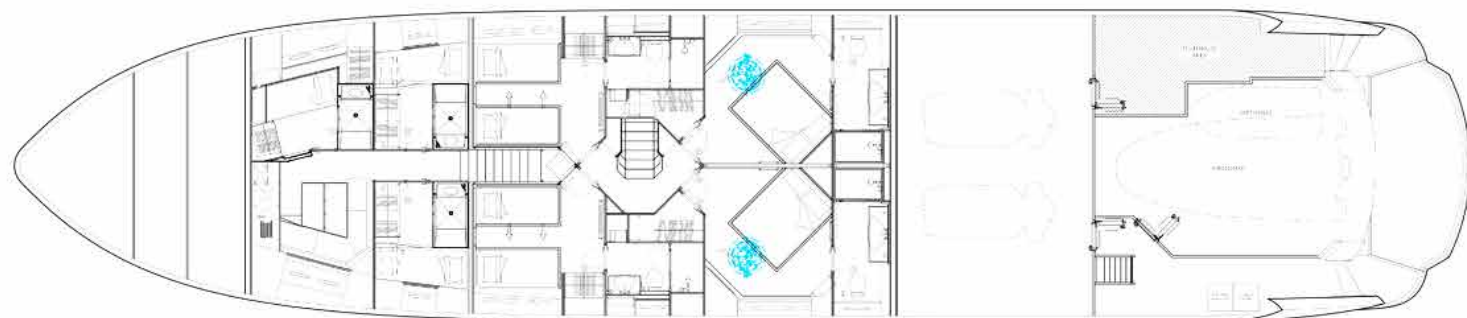
FLYBRIDGE



WHEELHOUSE



MAIN DECK



LOWER DECK



SPECIFICATIONS

Length (m/ft): 34.53 / 113'3"
Beam (m/ft): 7.39 / 24'3"
Draft (m/ft): 2.8 / 9'2"
Year Built: 2013
Builder: Sunseeker
WiFi: Yes
Deck Jacuzzi: Yes
Air conditioning: Yes
Stabilisers at anchor: Yes
Number of Cabins: 5
Maximum guests sleeping: 10
Cabin Configuration: 3 double, 2 twin (Convertible)
Total crew: 5

TENDERS AND TOYS

Williams 565 Diesel Jet Tender 2013
2 Jet Skis Yamaha GP 1800 2018
2 Seabobs F5S 2017
2 Paddleboards
2 Mountain Bikes
Towable toys, Skis, Wake boards, Wake Surf
Small Fishing gear
Snorkeling gear

M/Y MAORO

>Promotional video link<